

308 SHERIDAN DRIVE TOPEKA, IN 46571

APPROVER'S SEAL

MODIFICATIONS

| | | | |
|---|-------------------------|----|----------|
| 2 | REVISED WINDOWS IN MBR | JR | 05-15-18 |
| 3 | 2019 UPDATES | JR | 11-27-18 |
| 4 | ROTATED FURNACE | JR | 07-27-20 |
| 5 | REVISED REAR DOOR SWING | TC | 05-12-23 |

PROPRIETARY AND CONFIDENTIAL
 THESE DRAWINGS AND SPECIFICATIONS ARE ORIGINAL,
 PROPRIETARY AND CONFIDENTIAL MATERIALS OF CHAMPION.
 COPYRIGHT © 1976-2008 BY CHAMPION

MODEL: 2460 204
 3BD 2BATH

TITLE: LITERATURE PLAN

DRAWN BY: JDRAKE

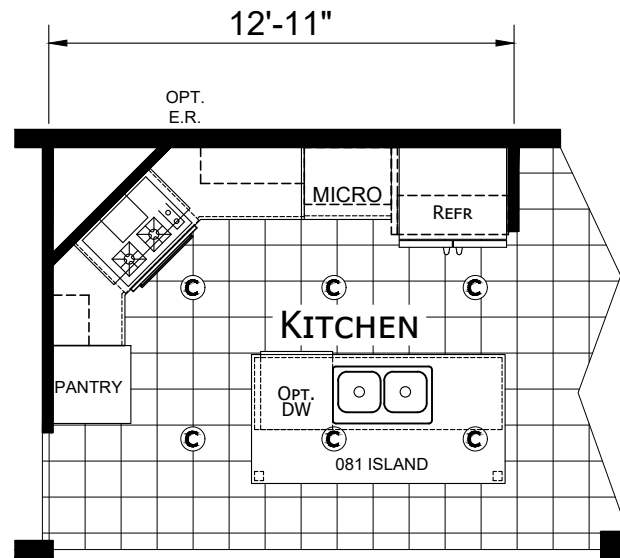
DATE: 12-10-18

SCALE: 1/8" = 1'-0"

SHEET:

L-101

REV. A



OPT. ULTIMATE KITCHEN 2



308 SHERIDAN DRIVE TOPEKA, IN 46571

APPROVER'S SEAL

MODIFICATIONS

MODEL: 2460 204
3BD 2BATH

TITLE: LITERATURE PLAN OPT.

DRAWN BY: A.GOULD

DATE: 11-04-22

SCALE: 3/16" = 1'-0"

SHEET:

L-101

REV. A

PROPRIETARY AND CONFIDENTIAL
THESE DRAWINGS AND SPECIFICATIONS ARE ORIGINAL,
PROPRIETARY AND CONFIDENTIAL MATERIALS OF CHAMPION.
COPYRIGHT © 1976-2008 BY CHAMPION